

# ABOUT A CHAIR / AAC 123 SOFT DUO

DESIGN BY HEE WELLING & HAY



The AAC 123 Soft Duo fuses a soft quilted shell and contrasting materials with the natural elegance and character of the four-legged wooden base. Retaining the same high backrest and generous seat that characterises the series, this design features a solid base with angled legs that slant slightly outwards for optimal stability. The oak base is available in different finishes and the quilted shell is offered with two different textiles or leathers to create a unique look that works equally well in corporate, public or private contexts.

## PRODUCT DETAILS

- / Part of a multi-functional family of dining and conference chairs, office chairs, bar stools, lounge chairs, tables, an ottoman and a sofa.
- / Variety of textiles and base finishes.
- / Available in a standard moulded foam upholstery and a soft quilted version with added wadding in a large selection of fabrics and leathers.
- / Other base options are: 4 star swivel base, 4-leg steel tube base and 5 star swivel base with gas lift.
- / Suitable for a wide variety of private and public environments.
- / Qualified for contract use.

# HAY

## MATERIAL

SHELL / 10 mm injection moulded polypropylene with 10% glass fibre. Full upholstered.

FOAM / 15 mm cut foam, 15 mm super soft cut foam and 40 mm wadding.

BASE / Moulded plywood.

## FABRIC AND FINISH

Available in a large selection of standard fabrics and leathers.

### STANDARD FABRICS BY KVADRAT

/ Remix	/ Fiord
/ Surface by HAY	/ Hallingdal
/ Steelcut	/ Canvas
/ Steelcut Trio	/ Compound
/ Melange Nap	/ Harald
/ Divina	/ Lila
/ Divina Melange	/ Coda
/ Divina MD	/ Balder

### MAHARAM FABRIC\*

/ Mode

### ROMO FABRICS\*

/ Ruskin	/ Olavi by HAY
/ Roden	/ Linara

### COSY COLLECTION\*

/ Bolgheri	/ DOT 1682
/ Fairway	/ Flamiber

### VELOUR FABRICS\*

/ Lola	/ Ice (UK only)
--------	-----------------

### STANDARD LEATHERS BY CAMO LEATHER

/ California	/ Silk
/ Sierra	

\*Only available in colours selected by HAY.

## BASE FINISH



Please note that the colour codes are indicative.

BASE FINISH / Available in 4 different base finishes.

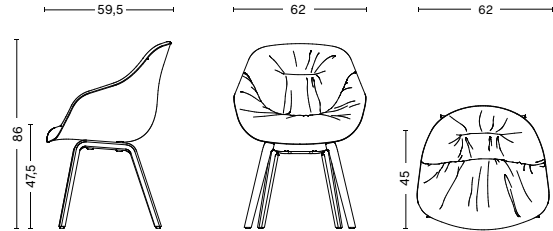
- / Black stained oak veneer (RAL 9005)
- / Matt lacquered oak veneer
- / Clear lacquered oak veneer
- / Soaped oak veneer

## CONSTRUCTION

BASE / Plywood legs section connected with solid oak cross bars glued and fixed with embedded metal brackets.

#### DIMENSIONS

- / WIDTH 62 cm / 24.41"
- / DEPTH 59,5 cm / 23.42"
- / HEIGHT 86 cm / 33.86"
- / SEAT HEIGHT 47,5 cm / 18.7"
- / SEAT DEPTH 45 cm / 17.72"



#### GLIDERS

PLASTIC GLIDER (STANDARD ON ALL) / Suitable for most floorings which are not too sensitive

FELT GLIDER STANDARD / For wooden floors. Not for sensitive wooden floors like pine wood or painted floors. Here we recommend felt glider soft.

FELT GLIDER SOFT / For sensitive floors like soft wooden floors and painted floors etc.

#### OPTIONS

/ CMHR foam (fire retardant).

#### TESTS

EN 16139:2013 / Furniture - Strength, durability and safety - Requirements for non-domestic seating.

L2: Extreme use - Loading according to Test severity L2.

#### NOTE

Please note that AAC 100 Soft Duo is available in selected textile combinations.

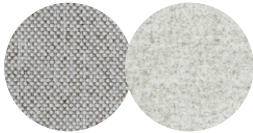
#### DOWNLOADS

2D files, 3D files and packshots are available in our imagebank at hay.com.

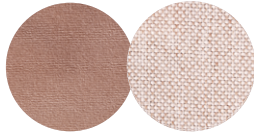
Care- and maintenance instructions and test certificates are available at hay.com.

SELECTED FABRICS & COMBINATIONS

BACK / FRONT



MODE 008\* DIVINA MELANGE 120



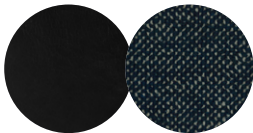
LOLA ROSE\*\* MODE 026\*\*



STEELCUT TRIO 213 OLAVI BY HAY 01\*



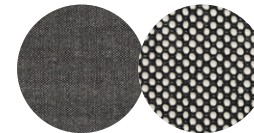
LOLA NAVY\*\* OLAVI BY HAY 14\*\*



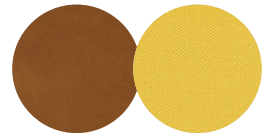
BLACK SILK 0842 FAIRWAY DARK BLUE 308-288\*



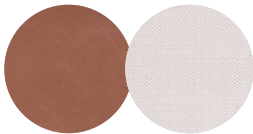
SILK COGNAC SIL0250 BOLGHERI LGG60



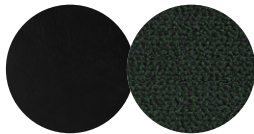
REMUX 152 DOT 1682 02 BIANCO/NERO



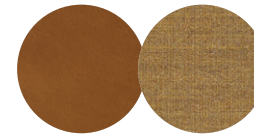
SILK COGNAC SIL0250 STEELCUT TRIO 446



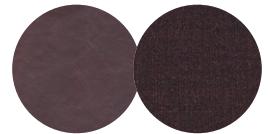
SILK CHESTNUT SIL0229 STEELCUT TRIO 226



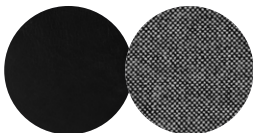
SILK BLACK SIL0842 OLAVI BY HAY 16\*



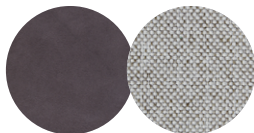
SILK COGNAC SIL0250 REMIX 433



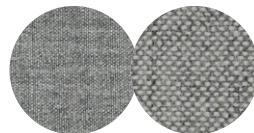
SILK DARK BROWN SIL0329 REMIX 373



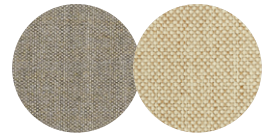
SILK BLACK SIL0842 HALLINGDAL 166



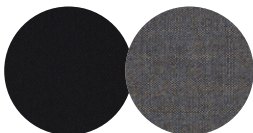
SILK GREY SIL0855 MODE 008\*



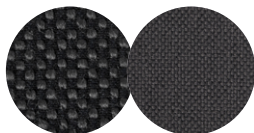
REMUX 133 HALLINGDAL 116



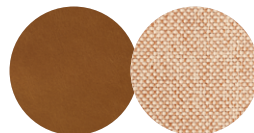
REMUX 233 MODE 014\*



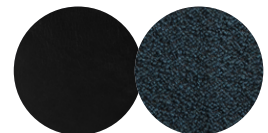
STEELCUT TRIO 195 REMIX 852



DOT 1682 03 ANTRACITE MODE 005\*



SILK COGNAC SIL0250 MODE 021\*



SILK BLACK SIL0842\*\* FLAMBER PETROL BLUE J4\*\*

\*FR TREATED  
\*\*NOT AVAILABLE IN UK