

ABOUT A CHAIR / AAC 121 SOFT DUO

DESIGN BY HEE WELLING & HAY



The AAC 121 Soft Duo counterbalances its soft quilted shell and contrasting materials with the more formal expression of the aluminium swivel base. Retaining the same high backrest and generous seat that characterises the series, this design features a functional base with legs that fan out from the centre. The base is available in polished or powder-coated aluminium, and the quilted shell is offered with two different textiles or leathers to create a unique look that works equally well in corporate, public, or private contexts.

PRODUCT DETAILS

- / Part of a multi-functional family of dining and conference chairs, office chairs, bar stools, lounge chairs, tables, an ottoman and a sofa.
- / Variety of textiles and base finishes.
- / Available in a standard moulded foam upholstery and a soft quilted version with added wadding in a large selection of fabrics and leathers.
- / Other base options are: moulded plywood base, 4-leg steel tube base and 5 star swivel base with gas lift.
- / Suitable for a wide variety of private and public environments.
- / Qualified for contract use.

HAY

MATERIAL

SHELL / 10 mm injection moulded polypropylene with 10% glass fibre. Full upholstered.

FOAM / 15 mm cut foam, 15 mm super soft cut foam and 40 mm wadding.

BASE / 4 star swivel base in cast aluminium.

FABRIC AND FINISH

Available in a large selection of standard fabrics and leathers.

STANDARD FABRICS BY KVADRAT

/ Remix	/ Fiord
/ Surface by HAY	/ Hallingdal
/ Steelcut	/ Canvas
/ Steelcut Trio	/ Compound
/ Melange Nap	/ Harald
/ Divina	/ Lila
/ Divina Melange	/ Coda
/ Divina MD	/ Balder

MAHARAM FABRIC*

/ Mode

ROMO FABRICS*

/ Ruskin	/ Olavi by HAY
/ Roden	/ Linara

COSY COLLECTION*

/ Bolgheri	/ DOT 1682
/ Fairway	/ Flamiber

VELOUR FABRICS*

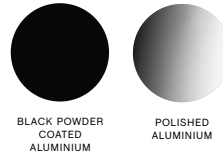
/ Lola	/ Ice (UK only)
--------	-----------------

STANDARD LEATHERS BY CAMO LEATHERS

/ California	/ Silk
/ Sierra	

*Only available in colours selected by HAY.

BASE FINISH



Please note that the colour codes are indicative.

BASE FINISH / Available in 2 different base finishes.

/ Black powder coated aluminium (RAL 9005)

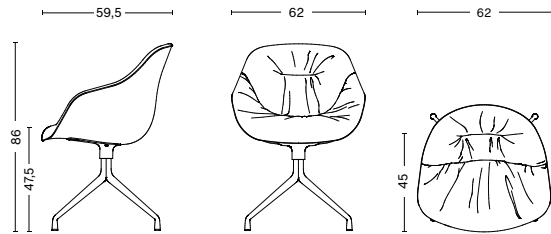
/ Polished aluminium

CONSTRUCTION

BASE / 4 single legs connected around a cast conical center, reinforced with metal brackets for additional strength. With swivel function made from durable POM (Polyoxymethylen).

DIMENSIONS

/ WIDTH 62 cm / 24.41"
/ DEPTH 59,5 cm / 23.42"
/ HEIGHT 86 cm / 33.86"
/ SEAT HEIGHT 47,5 cm / 18.7"
/ SEAT DEPTH 45 cm / 17.72"



GLIDERS

PLASTIC GLIDER (STANDARD ON ALL) / Suitable for most floorings which are not too sensitive.

FELT GLIDER / For wooden floors.

OPTIONS

/ CMHR foam (fire retardant).

TESTS

EN 16139:2013 / Furniture - Strength, durability and safety - Requirements for non-domestic seating.
L2: Extreme use - Loading according to Test severity L2.

NOTE

Please note that AAC 100 Soft Duo is available in selected textile combinations.

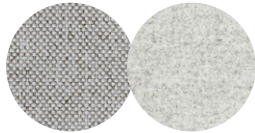
DOWNLOADS

2D files, 3D files and packshots are available in our imagebank at hay.com.

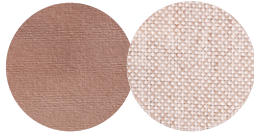
Care- and maintenance instructions and test certificates are available at hay.com.

SELECTED FABRICS & COMBINATIONS

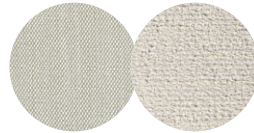
BACK / FRONT



MODE 008* DIVINA MELANGE 120



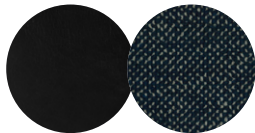
LOLA ROSE** MODE 026**



STEELCUT TRIO 213 OLAVI BY HAY 01*



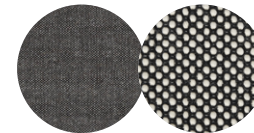
LOLA NAVY** OLAVI BY HAY 14**



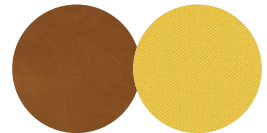
BLACK SILK 0842 FAIRWAY DARK BLUE 308-288*



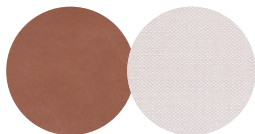
SILK COGNAC SIL0250 BOLGHERI LGG60



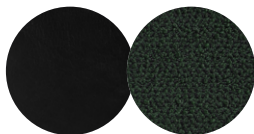
REMX 152 DOT 1682 02 BIANCO/NERO



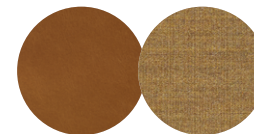
SILK COGNAC SIL0250 STEELCUT TRIO 446



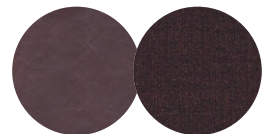
SILK CHESTNUT SIL0229 STEELCUT TRIO 226



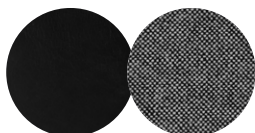
SILK BLACK SIL0842 OLAVI BY HAY 16*



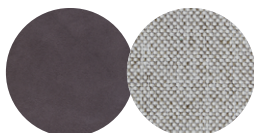
SILK COGNAC SIL0250 REMIX 433



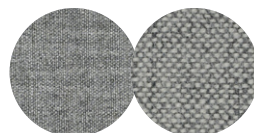
SILK DARK BROWN SIL0329 REMIX 373



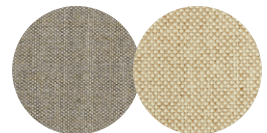
SILK BLACK SIL0842 HALLINGDAL 166



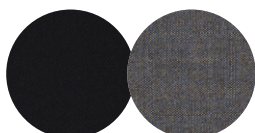
SILK GREY SIL0855 MODE 008*



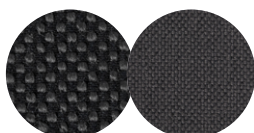
REMX 133 HALLINGDAL 116



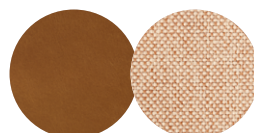
REMX 233 MODE 014*



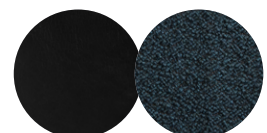
STEELCUT TRIO 195 REMIX 852



DOT 1682 03 ANTRACITE MODE 005*



SILK COGNAC SIL0250 MODE 021*



SILK BLACK SIL0842** FLAMBER PETROL BLUE J4**

*FR TREATED
**NOT AVAILABLE IN UK

HAY

HAY Havnen 1 8700 Horsens Denmark +45 4282 0282 / www.hay.com