

K REX KRALJ



Seat offset upholstery

4455 CHAIR

Dining Chair, designer Niko Kralj, 1955

Weights and volumes

Product weight (kg)	4,6
Nett. weight product including packaging (kg)	6,6
Nett. Size packaging (cm) (d x w x h)	54 x 59 x 78

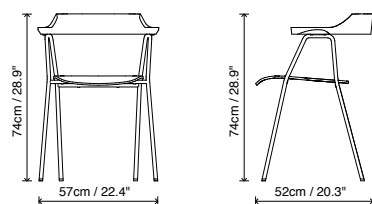
Product weight (lb)	10,1
Nett. weight product including packaging (lb)	14,6
Nett. Size packaging (inches) (w x d x h)	23,2 x 21,3 x 30,7

Material	powdercoated steel frame, solid oak backrest and oak plywood seat upholstery PU foam
-----------------	--

Strength & stability	Complies with level 1, according to EN16139:2013 and with reference to norms EN1728:2012 & EN1022:2015
---------------------------------	--

Fire rating	CMHR foam compliant to TB117 / BS5852 crib 5 optional
--------------------	---

Product measurements



Finishes

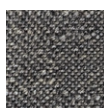


black oak

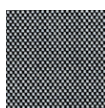


steel parts
black
powdercoated

Fabric and leathers



Novak



Rohi Novum



Kvadrat
Harald 3



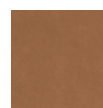
Kvadrat
Steelcut Trio 3



Kvadrat
Mosaic 2



Mastrotto
Linea



Sorensen
Dunes